



Conservation and Gamecover Crops



Introduction

So, what a year! A worldwide pandemic and a new relationship with the European Union. The one constant being that our beautiful countryside still needs farming and managing for the environmental prosperity of us all.

From 2021 the Government intends to remove all 3 of the greening requirements: Crop diversification, Ecological Focus Areas (EFA) and the permanent grassland rules from the Basic Payment Scheme (BPS) which makes the Countryside Stewardship Scheme even more important.

Evaluating your environmental assets and developing a plan for next year's crops is important:

- **What worked well this year?**
- **What would you do differently?**
- **Are your conservation areas delivering the benefits you had expected?**

The Environmental Land Management (ELM) scheme is currently under evaluation and won't be launched until 2024. Initial scheme options look likely to include whole field options, as well as the traditional margin areas.

We hope you find our brochure a useful resource to help you plan an effective conservation programme.

The HiBird team

Limagrain Plant Breeding

As a major international plant breeding company, Limagrain can utilise its breeding programmes to evaluate and commercialise seed products suitable for conservation and gamecover.

The maize breeding programme ensures that HiBird maize blends continue to include the very best varieties; they are always tested in the UK for yield, early vigour and standing ability and it's only when a variety has proven itself, that it will be included in the HiBird mixtures.

You will find many of the products that appear in this catalogue are bred by Limagrain. There are ongoing breeding programmes currently developing new varieties of the following species:

- Kale
- Rape kale hybrids
- Maize
- Sunflowers
- Cereals
- Oilseeds
- Grasses for environmental schemes

Habitats for Wildlife

Crop options for farmland birds, pollinators and grass margin habitats

Creating the perfect habitat is vitally important and will enable future generations to know that we played our part in securing our wildlife and plant populations. The start of this process begins by investing in the right seeds mixture that will allow you to deliver environmental benefits to the highest level. All HiBird seeds contained in this brochure have been fully tested for germination and purity enabling your crop to establish quickly and releasing its potential.

Habitats for Wildlife

01 - 05

Grass Field Margins

10 - 11

Colour Splash Flowers

31

Crops to Feed Birds

06 - 07

Wildflowers

12 - 14

Sowing and Cover Guide

32

Crops for Pollinators

08 - 09

Game & Wildlife Management

15 - 30

Contacts

33



Countryside Stewardship

The UK Government will continue to offer Countryside Stewardship agreements in 2021, 2022 and 2023.

Countryside Stewardship will eventually be replaced with the new Environmental Land Management (ELM) scheme. This will follow trialling and testing and a national pilot involving farmers and land managers during the next few years. The full ELM scheme should be in place from 2024. Signing up to a Countryside Stewardship agreement will put you in a great position to join ELM. Joining an environmental scheme will give you a viable, long-term source of income for providing environmental benefits as the Basic Payment Scheme (BPS) payments start to reduce.

- **Higher Tier** is for land that requires more complex management tailored to the individual sites
- **Mid Tier** provides a range of options and capital items that together help to deliver a broad range of environmental benefits. Within the Mid Tier you can choose from:

Wild Pollinator and Farm Wildlife Package (WPFWP)

This package groups management options together. This will help you to provide farmland wildlife with the essential resources they need to thrive and breed successfully. WPFWP includes packages for arable, pastoral, and mixed farms.

The Wildlife Offers provide a simpler set of options to help improve the wildlife on your farm by improving habitats for pollinators, farmland birds and other wildlife.

no matter where they are or what they farm.

The paperwork for the new offers is quicker and easier to get through. This is down to more streamlined evidence checks and shorter application forms, designed to help save farmers valuable time. The scheme is also non-competitive, meaning that all farmers who meet the eligibility requirements can get an agreement to deliver a minimum of 3 options, depending on the offer you have selected.

Further details are available, visit www.gov.uk/countrysidestewardship

Scotland



The Agri-Environment Climate Scheme promotes land management practices which protect and enhance Scotland's natural heritage, improve water quality and manage flood risk. Eligible contract holders have been contacted and asked if they wish to receive an extension offer to extend their contract by one year to 31 December 2021.

The scheme includes a wide range of options for arable farmers:

- Unharvested conservation headlands
- Wild bird seed for farmland birds
- Forage brassica crops for farmland birds
- Stubbles followed by green manure
- Retention of winter stubbles
- Beetlebanks
- Grass strips in arable fields

Further details can be found on the Scottish rural payment's website www.ruralpayments.org

Wales



Glastir is a 5-year whole farm sustainable land management scheme available to farmers and land managers across Wales. The scheme is split into 3 sections, Entry, Advanced and Commons and its aims are:

- Reducing carbon and greenhouse gas emissions
- Adapting to climate change and building greater resilience into farm businesses
- Managing our water resources to improve water quality and reduce flood risks
- Contributing to economic sustainability of farms, and the wider rural community
- Protecting the landscape and the historic environment while improving access
- Contributing towards a reversal in the decline of Wales' native biodiversity

The scheme includes a wide range of options including:

- Retaining winter stubbles
- Establishing an unsprayed root crop
- Establish a wildlife cover crop
- Unharvested cereal headland



The wildlife offers

Four new Countryside Stewardship Scheme offers have been introduced for farmers and land managers.

Significant improvements have been made to the scheme to make it simpler and easier for farmers and land managers to apply.

The four new offers are;

- Arable
- Upland
- Lowland Grazing
- Mixed Farming

The Mixed Farming option will provide tailored options covering the full range of different farm types, so farmers and land managers can deliver environmental benefits

Championing the Farmed Environment (CFE) is encouraging farmers and land managers across England to protect and enhance the environmental value of farmland by taking up voluntary measures. CFE will help you choose the best measure, select the right site and manage the area to maximise the environmental value. You can learn more about the campaign by visiting their website www.cfeonline.org.uk



CS Option
.....
AB13

When you see this graphic on the product pages, it indicates which CS option the variety is suitable for, as detailed in the chart below.

					CROPS FOR POLLINATORS				GRASS FIELD MARGINS		WILD BIRD SEED MIXTURES						BRASSICA FODDER CROPS	SOIL IMPROVING	
CODE	OPTION TITLE	ENVIRONMENTAL BENEFIT	HIGHER TIER	MID TIER	BEE MIX	FLOWER RICH MARGIN	LEGUME 2	MULTISPECIES LEY	BASIC HABITAT	BEETLE BANK	LINNET	BUNTING	BUMBLEBIRD	JACK RUSSELL	BIRD FEEDER	2 WBF	STUBBLE TURNIP/ FORAGE RAPE	LIFT N FIX	SOIL IMPROVER
PAGE NUMBER >					8	9	9	9	10	11	6	6	6	7	7	7	19, 26 & 29	-	-
AB1	Nectar flower mix	Boost essential food sources for pollinators	✓	✓	✓														
AB3	Beetle banks	Provides nesting & foraging habitats	✓	✓						✓									
AB8	Flower rich margins & plots	Provides important habitat & foraging area	✓	✓		✓													
AB9	Winter bird food	Food for farmland birds	✓	✓							✓	✓		✓	✓	✓			
AB13	Brassica fodder crop	Site for seed eating birds in a pastoral area	✓	✓													✓		
AB15	Two year sown legume fallow	Food for pollinators & farmland birds	✓	✓			✓												
AB16	Autumn sown bumblebird	Food source for birds & nectar feeding insects	✓	✓									✓						
GS4	Legume & herb rich swards	Habitat for invertebrates	✓	✓				✓											
OP2	Wild bird seed mixture	Food source for farmland birds	✓	✓							✓	✓		✓	✓	✓			
OP4	Multi species ley	Habitat for farmland wildlife	✓	✓				✓											
OP5	Undersown cereal	Habitat for farmland wildlife	✓	✓				✓											
SW1	4-6m buffer strip on cultivated land	New habitat and protecting landscapes	✓	✓					✓										
SW3	In field grass strips	Helps reduce pesticides transported through surface run-off	✓	✓					✓										
SW4	12-24m watercourse buffer strip	Helps reduce pesticides transported through surface run-off	✓	✓					✓										
SW5	Enhanced management of maize crops	Reduce soil erosion and surface run-off	✓	✓														✓	✓
SW6	Winter cover crops	Reduce nitrate leaching	✓	✓														✓	✓

IMPORTANT NOTE:

Whilst we have taken every care in the preparation of this guide, it is not a substitute for reading the official rules and regulations associated with the various schemes currently in operation. It is vitally important that you keep fully up-to-date with the latest regulations in force at the time you make your seed purchasing decisions. This information can normally be obtained from various websites or via direct contact with the appropriate government offices in your locality.

Farmland Birds

The provision of important food resources for farmland birds is vital in the autumn and winter months and more specifically in the hungry gap period between winter and spring.

The Countryside Stewardship Scheme now has an autumn sown option to complement the spring sown seed mixtures. The Bumblebird mixture below will provide a food source to both farmland birds and nectar feeding insects.



Seed Mixtures for Specific Farmland Birds

Limagrain has been working with a variety of different agencies to produce a range of seed mixtures specifically to feed some of the UK's favourite birds.

Linnet

- Produces an abundance of small seeds
- Also suitable for tree sparrows and grey partridges

Contains: kale, oilseed rape, red millet, white millet, linseed, mustard, oilseed radish

Supplied in 20 kilo 0.5 hectare units



CS Option
AB9, OP2

Bunting

- Cereal based mixture
- Seed use from September to February
- Also suitable for house sparrow, yellow hammer and skylarks

Contains: Triticale, spring wheat, spring barley, quinoa, red millet, white millet and oilseed radish

Supplied in 20 kilo 0.5 hectare units



CS Option
AB9, OP2

Bumblebird Mixture

- Abundant supply of small seeds during the winter
- Ideal for tree sparrows and corn buntings
- Pollen and nectar source from early to late summer
- Formulated to attract bumblebees, solitary bees, butterflies and hoverflies
- Autumn sown, establish before 7th September

Mixture Formulation

- Winter Triticale
- Winter barley
- Fodder radish
- Crimson clover
- Birdsfoot trefoil
- Gold of pleasure
- Kale
- Common vetch
- Alsike clover
- Red clover
- Mustard
- Phacelia

Supplied in 15 kilo 0.5 hectare units

WHY SELECT THIS CROP?

Autumn sown crop for both farmland birds and nectar feeding insects



CS Option
AB16

2 YEAR

Jack Russell

- Fantastic feed source for one year
- Herbicide tolerant
- Inclusion of grain sorghum gives structure and winter hardiness
- Seed shed from early Autumn
- Derogation is required before spraying

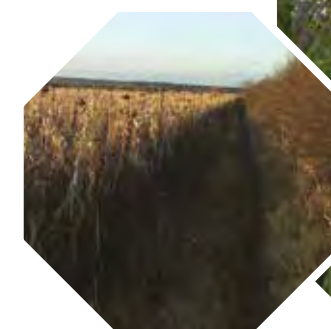
Mixture Formulation

- Spring Triticale
- Grain sorghum
- Millet blend
- Sunflower
- Oilseed radish
- Linseed

Supplied in 20 kilo 0.5 hectare units

WHY SELECT THIS CROP?

A herbicide tolerant mixture with fantastic colour



STOMP AQUA TOLERANT

CS Option
AB9, OP2

1 YEAR



Bird Feeder

- A combination of small-seed bearing crops
- Excellent feed potential
- Wide range of use from wild birds
- Good spread of seed shedding dates
- The ultimate bird feeder!
- Spring sown with 2 year potential

Mixture Formulation

- Kale
- Linseed
- Mustard
- Sunflower
- Oilseed radish
- Millet blend

Supplied in 12.5 kilo 0.5 hectare units

WHY SELECT THIS CROP?

Ideal mixture to provide a succession of food for farmland birds



CS Option
AB9, OP2

2 YEAR



2 WBF (2 Year Winter Bird Food)

- A combination of three small-seed bearing crops
- Succession of feed sources
- Triticale and quinoa provide excellent feed for both wild birds and reared game
- Ideally sown on field margins and headlands
- Spring sown with 2 year potential

Mixture Formulation

- Spring Triticale
- Stubble turnip
- Linseed
- Quinoa
- Kale
- Oilseed radish

Supplied in 20 kilo 0.5 hectare units

WHY SELECT THIS CROP?

A great mixture to provide a succession of food for 2 years



CS Option
AB9, OP2

2 YEAR





Bee Mixture

- A blend created to attract and maintain bumblebee populations
- Phacelia acts as a prolific flowering nurse crop whilst the red clover and sainfoin establish
- The phacelia will produce a fantastic display of purple flowers that bees will love
- You will be able to hear the mixture buzz!

Mixture Formulation

- | | |
|---------------------|---------------|
| • Phacelia | • Vetch |
| • Birdsfoot trefoil | • Oxeye daisy |
| • Sainfoin | • Wild carrot |
| • Alsike clover | • Red clover |

Supplied in 6 kilo 0.5 hectare units



CS Option
.....
AB1

Multispecies Ley

- Grassland creation
- A carefully blended mixture containing key legumes, grasses and herbs
- Ideal for creating legumes and herb-rich swards

Mixture Formulation

- | | | |
|----------------------|---------------------|--------------------------|
| Grasses | Legumes | Herbs/Wildflowers |
| • Meadow fescue | • Red clover | • Sainfoin |
| • Tall fescue | • White clover | • Chicory |
| • Timothy | • Alsike clover | • Ribgrass |
| • Crested dogstail | • Birdsfoot trefoil | • Yarrow |
| • Perennial ryegrass | | • Burnet |
| • Festulolium | | |

Supplied in 25 kilo 1 hectare units



CS Option
.....
GS4, OP4, OP5

Flower Rich Margin

- Ideal for field margins and buffers
- The mixture contains a blend of 80% grasses and 20% wildflowers
- The mixture will produce a habitat for bees and butterflies in the second year
- The area can be mowed in the first year to help tillering

Mixture Formulation

- | | | |
|-------------------------------|---------------------|--------------------|
| Grasses | Wildflowers | |
| • Browntop bent | • Agrimony | • Salad burnet |
| • Chewings fescue | • Birdsfoot trefoil | • Wild carrot |
| • Crested dogstail | • Knapweed | • Yarrow |
| • Sheeps fescue | • Black medick | • Red clover |
| • Slender creeping red fescue | • Kidney vetch | • Ribwort plantain |
| • Smooth stalked meadow grass | • Oxeye daisy | • Sainfoin |
| • Strong creeping red fescue | • Ladys bedstraw | • St Johns wort |
| | | • White campion |

Supplied in 10 kilo 0.5 hectare units



CS Option
.....
AB8

Legume 2

- Two year sown legume fallow
- Provides food for farmland wildlife, such as pollinators
- If used in the rotation, it will help reduce blackgrass flowering and contaminating arable rotations
- Flowers between early and late summer

Mixture Formulation

- Perennial ryegrass
- Red clover
- Alsike clover
- Common vetch
- Lucerne
- Sainfoin
- Birdsfoot trefoil

Supplied in 10 kilo 0.5 hectare units



CS Option
.....
AB15

Grass Buffers and Field Margins

The establishment of permanent grass buffer strips will produce new habitats, protect existing landscape features and improve water quality.

If used next to watercourses, buffers and margins can help prevent pollutants and sediments from being transported in surface water run-off. The strips will also provide safe green corridors to link habitats.



Beetle Bank

- Ideal for the creation of 2 metre tussocky grass ridges
- Beetle banks should run from one side of an arable field to the other for maximum benefits
- You may need to cut the grass several times during the first summer to aid establishment
- Provides a good, green corridor for animal movement

Mixture Formulation

- Chewings fescue
- Timothy
- Sheeps fescue
- Cocksfoot
- Meadow fescue
- Smooth stalked meadow grass

Supplied in 10 kilo 0.5 hectare units



MARGIN & BUFFER STRIP SOWING CALCULATOR

HOW MUCH SEED WILL I NEED?					
PRODUCT	PACK SIZE	SOWING RATE PER HECTARE	LENGTH OF FIELD MARGIN ONE UNIT WILL SOW		
			2m	4m	6m
Basic Habitat	10 kilos	20 kilos	2500m	1250m	833m
Beetle Bank	10 kilos	20 kilos	2500m	1250m	833m

Basic Habitat

- Ideally suited for either 2, 4 or 6 metre buffer strips
- Contains grasses that are the food plants of several butterflies and insects
- Once established, the mixture can help protect habitats from sprays and fertiliser applications
- Sow in spring or autumn

Mixture Formulation

- Chewings fescue
- Bent grass
- Smooth stalked meadow grass
- Timothy
- Tall fescue
- Meadow fescue
- Red fescue

Supplied in 10 kilo 0.5 hectare units



Wildflower
Management Guidelines

Select a weed-free site of low fertility. Fertiliser should not be used, since broad-leaved and grass weeds, together with cultivated grasses contained in standard mixtures, can be highly competitive on fertile soils. This can adversely affect seed germination, establishment and subsequent growth. However, increased grass cutting can help to counteract over-competitive growth.

Control weeds before sowing. Annual weeds may be hoed, buried or killed with a contact herbicide. Perennial weeds should be eradicated by a translocated glyphosate-based herbicide. Sow mixtures either from early March to early May, or from early August to mid-September. This will ensure optimum establishment of most species.

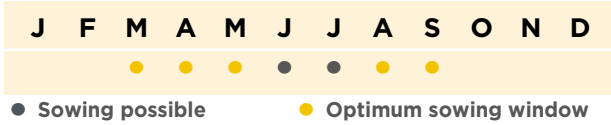
Cultivate the ground to provide a fine, weed-free seed bed. Firm if necessary. Take care to sow evenly, at the recommended rate. Thoroughly mixing one part seed with four parts dry sand makes it more easily distributed. Rake the seed in lightly with a spring-tined rake and firm the soil by treading or, preferably, rolling. This ensures that the seed comes into contact with moisture in the soil.

Water with a fine spray. This will avoid disturbing the surface of the soil. Keep the area well-watered and free from any unwanted plants.

Cut the sward every six to eight weeks during the first year after sowing and remove the cuttings. This will prevent the grass from over growing the slower growing wildflowers.

In the following years, cut in early spring, before growth starts, and in October, after all wildflower seeds have been shed. Remove the cuttings.

Wildflower Sowing Guide



Mixture Composition

We have carefully formulated our wildflower mixtures to meet a number of different habitats and soil types. This can range from a sandy soil to a hedgerow habitat. Low maintenance grass species (see panel below) are included in the mixtures to act as a nurse crop in the early years of establishment and growth. The grasses help suppress weed invasion, whilst allowing the wildflowers to flourish.

All our Wildflower mixtures contain 80% grasses and 20% native British produced wildflowers

80% Grasses

Browntop bent	<i>Agrostis capillaris</i>
Chewings fescue	<i>Festuca rubra commutata</i>
Crested dogstail	<i>Cynosurus cristatus</i>
Sheep's fescue	<i>Festuca ovina</i>
Slender creeping red fescue	<i>Festuca rubra litoralis</i>
Smooth stalked meadow grass	<i>Poa pratensis</i>
Strong creeping red fescue	<i>Festuca rubra rubra</i>

LG 1 Woodland and Heavy Shade

- A carefully selected mixture suitable for shaded areas and woodlands
- Sowing rate 3-5g/m²
- Pack size 1 kilo

Betony
Stachys officinalis
Bluebell
Hyacinthoides non-scripta
Foxglove
Digitalis purpurea
Garlic Mustard
Alliaria petiolata
Hedge Bedstraw
Galium mollugo
Hedge Woundwort
Stachys sylvatica

Nettle-Leaved Bellflower
Campanula trachelium
Red Campion
Silene dioica
Self Heal
Prunella vulgaris
Wild Angelica
Angelica sylvestris
Wood Avens
Geum urbanum
Wood Sage
Teucrium scorodonia



LG 2 Wetland and Water Meadow

- Suitable for damp, moist and wet soils also on saturated banks of ponds, streams, rivers and ditches
- Sowing rate 3-5g/m²
- Pack size 1 kilo

Betony
Stachys officinalis
Greater Birdsfoot Trefoil
Lotus uliginosus
Common Knapweed
Centaurea nigra
Meadow Buttercup
Ranunculus acris
Meadowsweet
Filipendula ulmaria
Oxeye Daisy
Leucanthemum vulgare

Purple Loosestrife
Lythrum salicaria
Ragged Robin
Lychnis flos-cuculi
Red Campion
Silene dioica
Self Heal
Prunella vulgaris
Sneezewort
Achillea ptarmica
Water Avens
Geum rivale



LG 3 Limestone Mix

- On soils overlying limestone or chalk, particular types of flowers can be found, and these are contained in this carefully selected blend of species
- Sowing rate 3-5g/m²
- Pack size 1 kilo

Agrimony
Agrimonia eupatoria
Betony
Stachys officinalis
Black Medick
Medicago lupulina
Common Birdsfoot Trefoil
Lotus corniculatus
Knapweed
Centaurea nigra
Cowslip
Primula veris

Dandelion
Taraxacum officinale
Field Scabious
Knautia arvensis
Greater Knapweed
Centaurea scabiosa
Hoary Plantain
Plantago media
Kidney Vetch
Anthyllis vulneraria
Oxeye Daisy
Leucanthemum vulgare

Salad Burnet
Sanguisorba minor
Self Heal
Prunella vulgaris
Wild Basil
Clinopodium vulgare
Wild Carrot
Daucus carota
Wild Mignonette
Reseda lutea
Yarrow
Achillea millefolium
Yellow Rattle
Rhinanthus minor



LG 4 Clay and Heavy Soils

- This mixture can be sown on all clay soils and uses species typically found on this soil type
- Sowing rate 3-5g/m²
- Pack size 1 kilo

Birdsfoot Trefoil
Lotus corniculatus
Bulbous Buttercup
Ranunculus bulbosus
Common Vetch
Vicia sativa
Knapweed
Centaurea nigra
Lady's Bedstraw
Galium verum
Lesser Trefoil
Trifolium dubium

Oxeye Daisy
Leucanthemum vulgare
Salad Burnet
Sanguisorba minor
Self Heal
Prunella vulgaris
Teasel
Dipsacus fullonum
Wild Carrot
Daucus carota



LG 5 Acid Soils Mix

- The flowers selected in this mixture naturally occur on soils characterised by a low pH, which allows you to produce a flowery sward on a range of acid soils
- Sowing rate 3-5g/m²
- Pack size 1 kilo



Common Birdsfoot Trefoil
Lotus corniculatus

Common Knapweed
Centaurea nigra

Common Sorrel
Rumex acetosella

Common Toadflax
Linaria vulgaris

Common Vetch
Vicia sativa

Dandelion
Taraxacum officinale

Devil's-Bit Scabious
Succisa pratensis

Lady's Bedstraw
Galium verum

Meadow Buttercup
Ranunculus acris

Musk Mallow
Malva moschata

Oxeye Daisy
Leucanthemum vulgare

St John's-Wort
Hypericum perforatum

Ragged Robin
Lychnis flos-cuculi

Self Heal
Prunella vulgaris

White Campion
Silene alba

Wild Basil
Clinopodium vulgare

Yellow Rattle
Rhinanthus minor



LG 6 General Purpose/Loam Soils

- This mixture is suitable for establishing flowery grassland on all loam/alluvial type soils and can produce a rich, diverse sward
- Sowing rate 3-5g/m²
- Pack size 1 kilo



Betony
Stachys officinalis

Common Birdsfoot Trefoil
Lotus corniculatus

Bulbous Buttercup
Ranunculus bulbosus

Catsear
Hypochaeris radicata

Cowslip
Primula veris

Common Knapweed
Centaurea nigra

Lady's Bedstraw
Galium verum

Oxeye Daisy
Leucanthemum vulgare

Salad Burnet
Sanguisorba minor

Self Heal
Prunella vulgaris

White Campion
Silene latifolia



LG 7 Hedgerow and Semi Shade

- Suitable for field and woodland margins
- Sowing rate 3-5g/m²
- Pack size 1 kilo



Betony
Stachys officinalis

Common Knapweed
Centaurea nigra

Garlic Mustard
Alliaria petiolata

Hairy St John's-Wort
Hypericum hirsutum

Hedge Bedstraw
Galium mollugo

Hedge Woundwort
Stachys sylvatica

Red Campion
Silene dioica

Self Heal
Prunella vulgaris

Teasel
Dipsacus fullonum

Wood Avens
Geum urbanum

Yarrow
Achillea millefolium



LG 8 Sandy/Dry Soils Mix

- On free draining sandy soils, we advise the use of this mixture to recreate a meadow typical for this soil type
- Sowing rate 3-5g/m²
- Pack size 1 kilo



Black Medick
Medicago lupulina

Birdsfoot Trefoil
Lotus corniculatus

Knapweed
Centaurea nigra

Dandelion
Taraxacum officinale

Field Forget-Me-Not
Myosotis arvensis

Hoary Plantain
Plantago media

Kidney Vetch
Anthyllis vulneraria

Lady's Bedstraw
Galium verum

Musk Mallow
Malva moschata

Oxeye Daisy
Leucanthemum vulgare

Perforate St John's-Wort
Hypericum perforatum

Ribwort Plantain
Plantago lanceolata

Self Heal
Prunella vulgaris

Viper's Bugloss
Echium vulgare

White Campion
Silene alba

Wild Carrot
Daucus carota

Wild Mignonette
Reseda luteola

Yarrow
Achillea millefolium

Yellow Rattle
Rhinanthus minor



Crops for Game & Wildlife Management

Crop options for winter holding, brood rearing and game drives

Cover crops can provide additional drives, autumn and winter feed as well as fantastic environmental benefits for wildlife. We have seen over the last few years an increase in the use of multispecies seed mixtures, some of which are herbicide tolerant, and provide a more diverse habitat than single sown species.

HiBird Maize Blend

- Our best selling gamecover maize
- All varieties are selected for good early vigour and standing power
- Laboratory tested for germination and vigour
- Contains varieties bred by Limagrain
- Seed can be treated with Korit bird repellent or a standard fungicide

CROP HEIGHT 180-200cm

Packed in 50,000 seed units

WHY SELECT THIS CROP?

HiBird Maize Blend will achieve a spread of maturity, cob ripeness and supply a valuable source of feed



HiBird Compact

- Ideal for late sowings
- Compact and short growth habit will ensure beating lines are kept straight
- Excellent early vigour and good standing power
- A hybrid selected from Limagrain's own breeding programme
- Seed is treated with Korit bird repellent and a fungicide

CROP HEIGHT 150-170cm

Packed in 50,000 seed units

WHY SELECT THIS CROP?

HiBird Compact is suitable for the more challenging maize growing areas and can be sown as late as mid June



HiBird Late

- Late variety
- Limited cob development
- Reduces food source for rats and badgers
- Selected from Limagrain's own breeding programme
- Seed is treated with Korit bird repellent and a fungicide

CROP HEIGHT 180-200cm

Packed in 50,000 seed units

WHY SELECT THIS CROP?

Limited cob development if the crops are sown later



Dwarf Shorty

- Ideal for driving and winter cover
- Can make excellent flushing points within maize
- Excellent replacement for kale
- Adds warmth to maize crops when sown adjacent
- Weed control possible
- Not suitable for Northern England or Scotland

CROP HEIGHT 90-100cm

Supplied in 12.5 kilo 0.5 hectare units

WHY SELECT THIS CROP?

Low crop canopy provides warmth and security, making Shorty the ultimate driving crop



Intermediate

- Ideal replacement for maize
- Makes excellent controlled driving cover
- Herbicide use possible
- Best sown in June

CROP HEIGHT 120-150cm

Supplied in 12.5 kilo 0.5 hectare units

WHY SELECT THIS CROP?

If rats and badgers are a problem, Intermediate can provide a similar height to maize crops without the cob!



Giant Jumbo Star

- Tall, dense cover ideally used for a windbreak around maize
- Good vigour and fast growth
- Later drilled crops will have reduced height potential
- Crops can screen guns allowing them to get in position without disturbing the birds

CROP HEIGHT 200-220cm

Supplied in 12.5 kilo 0.5 hectare units

WHY SELECT THIS CROP?

Jumbo Star can be sown later than other sorghums, just watch it grow!

Caledonian

- The first kale bred with clubroot tolerance
- Caledonian can be continuously sown on brassica sick sites
- A taller kale allowing for easier bird access
- Winter hardy
- Excellent germination and vigour potential
- British bred, reliable and trusted
- Seed available with Start-uP® nutrient package
- Sow at 5 kilos per hectare

CROP HEIGHT 90-100cm

WHY SELECT THIS CROP?

Why run the risk of crop failure? Caledonian comes with clubroot tolerance



CLUBROOT TOLERANT

Keeper

- A shorter variety with excellent lodging resistance
- Excellent leaf cover with a bare floor
- High leaf to stem ratio
- British bred and fully tested for germination and vigour to ensure maximum establishment
- Winter hardy
- Seed available with Start-uP® nutrient package
- Sow at 5 kilos per hectare

CROP HEIGHT 80-90cm

WHY SELECT THIS CROP?

A high leaf to stem ratio ensures maximum cover and protection for your birds



START-UP® SEED

START-UP ADVANCED SEED TREATMENT TO PROMOTE EARLY ROOT DEVELOPMENT

Start-uP® consists of a unique combination of soluble nutrients and bio-active compounds. It contains a highly mobile form of phosphorus known as phosphite – a molecule which can move through the major transport routes of the plant (the xylem and phloem) much faster than conventional phosphate fertiliser.

Combined with a naturally derived bio active complex to promote **rapid early root development and maintain overall plant health**, Start-uP® is able to provide a readily available source of **essential nutrients** and other beneficial compounds precisely when and where they are most needed by the plant.



Carbon (Kale x Mustard)

- Excellent cover produced in a short period of time
- Best sown in June or July
- Excellent cover by November
- Frost tolerant
- Ideal for new sowings or for patching existing areas
- Can be sown into cereal stubble
- Seed is treated with Start-uP® nutrient package
- Sow at 4 kilos per hectare

CROP HEIGHT 60-100cm

WHY SELECT THIS CROP?

Fantastic dry cover produced in a short time



**CS Option
AB13**

Interval (Rape/Kale hybrid)

- Fantastic fast growing rape with kale parentage
- Excellent establishment and early vigour
- Ideal replacement for kale when sown in June or July
- Winter hardy, full season cover
- Can be used as a pioneer or rescue crop
- Seed available with Start-uP® nutrient package
- Sow at 5 kilos per hectare

CROP HEIGHT 50-100cm

WHY SELECT THIS CROP?

Crop failed or left it late? Interval is the ultimate fast growing cover provider



**CS Option
AB13**

Skyfall (Hybrid Brassica)

- Fast growing and leafy
- Late sown option for June to August
- Large leaves for extra cover
- Can be successfully grazed after use
- Can be sown into cereal stubble
- Seed is treated with Start-uP® nutrient package
- Sow at 5 kilos per hectare

CROP HEIGHT 30-40cm

WHY SELECT THIS CROP?

Late sown cover provider, ideal for partridges



Magic Millet

- Dense reed millet
- Ideal for use alongside maize
- Windproof and warming
- Good flushing point
- Also contains red and white millet for feed value
- Winter hardy

CROP HEIGHT 100-120cm

Supplied in 10 kilo 1 hectare unit



Top Flush Millet

- A carefully blended mixture of red, panorama and white millets
- Mixture ensures a wider window of seed shed
- Feed value from September to December
- Provides an excellent feed block if sown adjacent to maize
- Can be cross drilled or broadcast in maize crops to add feed value and warmth

CROP HEIGHT 80-100cm

Supplied in 10 kilo 1 hectare units



Proso White Millet

- This high yielding variety will provide huge seed yields
- Ideal for use with maize crops
- Can be used as a feeding block or flushing point
- Sow at 10-15 kilos per hectare

CROP HEIGHT 80-100cm

Supplied in 10 kilo 25 kilo units

We can also supply:

- Red Millet
- Tanka Millet Mix

WHY SELECT THIS CROP?

Winter hardy millet for later use

WHY SELECT THIS CROP?

Feeding birds can be expensive, why not grow your own feed and reduce your costs?

WHY SELECT THIS CROP?

Huge seed yields will provide additional feed and prevent birds from roaming



Sunflowers

Sunflowers have travelled the world since their discovery in America, where native Americans domesticated and bred the plant. Spanish boats crossed the Atlantic Ocean and christened the plant *Helianthus annuus* from the Greek "Helios" meaning sun.

Used initially as an ornamental plant until an English inventor – Arthur Bunyan developed a method for extracting the oil from the seeds.

Sunflowers sown in April or early May can grow quickly in warm weather; flowers begin to form in June and show colour by the end of July and August. Flowering lasts approximately 2-3 weeks and seed use by farmland birds and game can begin in early October.

Sunspot

- Large, attractive flowers
- Excellent seed production
- Good standing ability
- Used by finches and game birds
- From Limagrains plant breeding programme

CROP HEIGHT 130-150cm

Supplied in 12.5 kilo 1 hectare units

WHY SELECT THIS CROP?

Excellent autumn feed source for game & farmland birds





Golden Retriever

- Stomp Aqua tolerant
- Excellent full season cover combined with seed shed potential
- Ideal driving cover for pheasants or partridges
- Winter holding potential
- Attractive to wild birds as well!

CROP HEIGHT 200-220cm

Mixture Formulation

- Dwarf sorghum
- Dwarf sunflowers
- Millet blend
- Oilseed radish

Supplied in 12.5 kilo 0.5 hectare units



Jack Russell

- Fantastic feed source for one year
- Herbicide tolerant
- Inclusion of grain sorghum gives structure and winter hardiness
- Seed shed from early autumn
- Derogation is required before spraying

CROP HEIGHT 150-200cm

Mixture Formulation

- Spring Triticale
- Grain sorghum
- Millet blend
- Sunflower
- Oilseed radish
- Linseed

Supplied in 20 kilo 0.5 hectare units



Cocker

- Butisan 'S' tolerant
- If weed control is your priority, this is the mixture for you!
- Full season cover for 2 years
- Derogation is required before spraying

CROP HEIGHT 80-90cm

Mixture Formulation

- Caledonian kale
- Mustard
- Oilseed radish
- Linseed

Supplied in 8 kilo 0.5 hectare units

STOMP AQUA TOLERANT

Stomp Aqua is effective against:

- Grass weeds
- Pansy
- Speedwells

- Chickweed
- Knotgrass
- Shepherd's purse

- Dead nettle
- Nettle
- Fat hen

BUTISAN 'S' TOLERANT

Butisan 'S' is effective against:

- Annual meadow grass
- Shepherd's purse
- Chickweed
- Dead nettle

- Groundsel
- Speedwells
- Mayweed
- Cranesbill

Weed Control

We are very pleased that with the help of BASF UK, we have jointly produced the herbicide guidelines printed below. We strongly recommend that you always check with a BASIS registered agronomist before applying any herbicides to your crop. If you intend to use a seed mixture in any stewardship schemes, derogation is required before spraying.

TYPE OF WEED CONTROLLED Max rate litre or Kg/Ha Application Timing	PRE-EMERGENCE				POST-EMERGENCE			
	Stale Seedbed	Crystal	Piconia	Stomp Aqua	Basagran SG	Crystal	Piconia	Stomp Aqua
	G & B S & A	G & B 4 A	G & B 3 A	G & B 2.9 or 3.3 S & A	B 1 S	G & B 4 A	G & B 3 A	G & B 2.9 or 3.3 S & A
MAINCROP								
Beans	YES			YES (max 2.9)	YES			
Borage	YES	CE (max 2)				CE (max 2)		
Buckwheat	YES							CE (max 2.9)
Fodder Beet	YES	CE (max 2)						
Gold of Pleasure	YES	CE						
Kale	YES	CE	CE	CE (max 2.2)	YES			YES (max 2.2)
Linseed	YES	CE		YES (max 3.3)	YES			YES (max 3.3)
Maize	YES	CE		CE (max 2.9)				
Nyger	YES	YES						CE (max 2.2)
Pearl Millet	YES	YES (max 2)						CE (max 2.9)
Red Millet	YES	CE	CE	CE (max 2.2)	CE	YES	CE	YES (max 3.3)
White Millet	YES	CE	CE	CE (max 3.3)	CE	CE	CE	
Quinoa	YES							
Saintfoin	YES			YES (max 2.9)				
Dwarf Sorghum	YES	YES	CE	CE (max 3.3)		YES	CE (max 2)	YES (max 3.3)
Spring Oilseed Rape	YES							
Triticale	YES	YES	YES	YES (max 2.9)		YES	YES	YES (max 2.9)
Sunflower	YES	CE		CE (max 2.9)				CE (max 2.9)
Swede	YES							
Sweet Clover	YES	YES (max 2)		YES (max 2.2)		CE (max 2)		YES (max 2.2)
CROP COMBINATIONS								
Kale & Quinoa	YES							YES (max 3.3)
Maize & White Millet	YES	CE		CE (max 2.9)	CE			CE (max 2.9)
Maize & Sunflower	YES	CE		CE (max 2.9)				
PERENNIAL CROPS								
Canary Grass	YES	YES	CE	YES (max 2.9)	CE	CE (max 2)	CE	CE (max 2.9)
Chicory	YES	CE		CE (max 2.2)		CE		YES (max 2.2)
Teasel	YES	YES		CE (max 2.9)				CE (max 2.9)
CATCH CROPS								
Oilseed Radish	YES							
Forage Rape	YES							
Mustard	YES	YES		CE (max 2.9)				
Phacelia	YES							
Stubble Turnip	YES							
Texcel Greens	YES	YES		YES (max 2.9)				
HI-BIRD MIXTURES								
Pro Driver	YES							CE (max 2.9)
Golden Retriever	YES	CE		CE (max 2.9)				
Cocker	YES							CE (max 2.9)
Pointer	YES							
King Mix	YES							
Spaniel	YES							

KEY: Weeds: **G** = Grass Weed Control, **B** = Broad Leaved Weed Control, **S** = Spring, **A** = Autumn, **S & A** = Spring & Autumn
Application time: **S** = Spring, **A** = Autumn, **S & A** = Spring & Autumn
= OK to apply
= OK to apply BUT some transient crop effects may be seen (e.g. chlorosis, crop thinning, etc). Using a lower dose rate may improve crop safety.
All information supplied is accurate to the best of our knowledge at the time of printing. All data is provided purely on the basis of crop safety and does not consider the legal status of product use. Limagrain and BASF can accept no liability for crop loss or damage. Products are applied at growers own risk. Ensure seed is sown to an appropriate depth and is adequately covered with fine, consolidated soil. Always check with your BASIS Registered Agronomist before applying any herbicides to your crop. Always read the product label and use pesticides safely.



Setter

- Two year, full season cover and feed
- Traditional mixture using a wide range of species
- Excellent seed shed from September onwards
- Fantastic for insect use
- Perfect winter holding cover
- Fully tried and tested

CROP HEIGHT 150-200cm

Mixture Formulation

- | | |
|----------------|---------------|
| • Phacelia | • Mustard |
| • Sweet clover | • Keeper kale |
| • Millet blend | • Buckwheat |
| • Maize | • Sunflower |

Supplied in 12.5 kilo 0.5 hectare units

WHY SELECT THIS CROP?

Setter will provide you with cover and feed throughout a two year period



Labrador

- Two year full season cover and feed
- Ideal for use in cooler, more exposed areas
- Triticale cereal helps prevent rabbit damage
- Brood rearing potential

CROP HEIGHT 100cm

Mixture Formulation

- | | |
|--------------------|-----------|
| • Spring Triticale | • Linseed |
| • Mustard | • Quinoa |
| • Kale | |

Supplied in 20 kilo 0.5 hectare units

WHY SELECT THIS CROP?

Labrador will tolerate low pH and difficult soil types



Pro Driver

- Thinner canopy for easier bird access and controlled drives
- Will show birds on the most inclement of days
- Fully tried and tested
- Huge seed shed potential

CROP HEIGHT 90-100cm

Mixture Formulation

- | | |
|-----------|-----------|
| • Kale | • Linseed |
| • Mustard | • Quinoa |

Supplied in 8 kilo 0.5 hectare units

WHY SELECT THIS CROP?

If partridges are your passion then Pro Driver's crop structure is ideal



Pointer

- A superb combination of fast establishment, winter hardiness and high feed value
- Includes new clubroot tolerant Bombardier kale
- Also includes Interval rape/kale hybrid for quick establishment and growth
- Sandoval quinoa gives a good mixture of early, intermediate and late maturing seed heads
- A great mixture to hold birds right to the end of the season

CROP HEIGHT 100-120cm

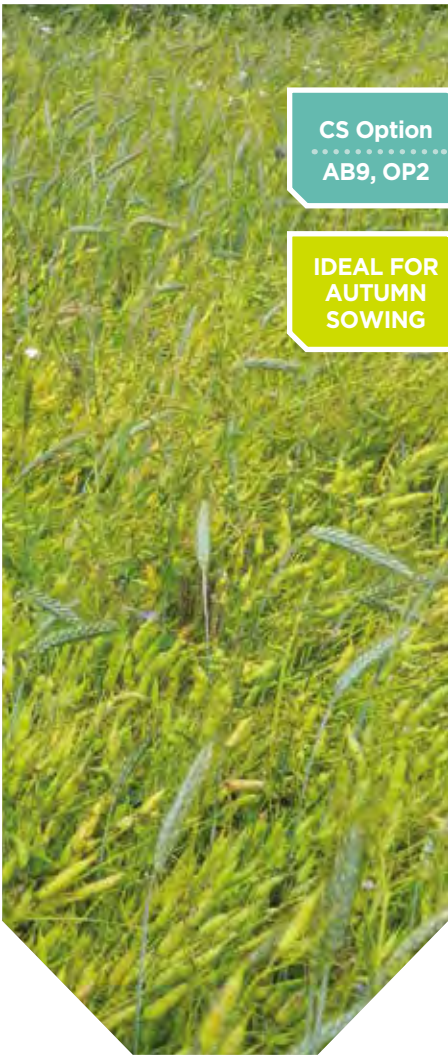
Mixture Formulation

- | |
|-----------------------------|
| • Bombardier kale |
| • Interval rape/kale hybrid |
| • Sandoval quinoa |

Supplied in 3.5 kilo 0.5 hectare units

WHY SELECT THIS CROP?

A great combination of feed, cover and reliability



Magnet

- Best sown in September/October
- Fantastic brood rearing cover the following spring
- Phacelia adds colour and insect use
- Seed shed from late summer onwards
- Fully tried and tested

CROP HEIGHT 100cm

Mixture Formulation

- | | |
|---------------|------------------|
| • Triticale | • Oilseed radish |
| • Phacelia | • Linseed |
| • Forage rape | • Mustard |

Supplied in 15 kilo 0.5 hectare units

WHY SELECT THIS CROP?

Autumn sown option

Spaniel

- Summer sown drought tolerant cover mixture
- Can be broadcast into cereal stubble
- Useful for patching areas where drought or flea beetle damage has occurred
- Fodder radish retains its seeds late into the season
- More winter hardy than mustard

CROP HEIGHT 80-100cm**Mixture Formulation**

- Carbon
- Interval rape/kale
- Mustard
- Oilseed radish

Supplied in 5 kilo 0.5 hectare units**WHY SELECT THIS CROP?**

If your crop has failed or established poorly, this fast growing recovery mixture can save the day!

Interval
(Rape/Kale hybrid)

- Fantastic fast growing rape with kale parentage
- Excellent establishment and early vigour
- Ideal replacement for kale when sown in June or July
- Winter hardy, full season cover
- Can be used also as a pioneer or rescue crop

CROP HEIGHT 50-100cm**Supplied in 5 kilo 1 hectare units****WHY SELECT THIS CROP?**

Crop failed or left it late? Interval is the ultimate fast growing cover provider

Carbon
(Kale x Mustard)

- Excellent cover produced in a short period of time
- Best sown in June or July
- Excellent cover by November
- Frost tolerant
- Ideal for new sowings or for patching existing areas
- Can be sown into cereal stubble
- Seed is treated with Start-uP® nutrient package

CROP HEIGHT 60-100cm**Supplied in 2 kilo 0.5 hectare units****WHY SELECT THIS CROP?**

Fantastic dry cover produced in a short time



Springer

- Ideal for sowing on areas that cannot be sown annually
- Triticale will provide feed in the first year
- Second and third years will see the chicory flower at a height of 1.5m
- Very drought tolerant due to deep rooting chicory
- Excellent driving cover

CROP HEIGHT 150-200cm (second year)**Mixture Formulation**

- Perennial chicory
- Spring Triticale

Supplied in 20 kilo 0.5 hectare units**WHY SELECT THIS CROP?**

Ideal for sowing on areas that cannot be sown annually

Reed Canary Grass
(*Phalaris Arundinacea*)

- Tall perennial cover
- Driving and nesting cover potential
- UK native
- Can be sown on difficult soil types
- Produces stolons and creeps
- Sow in 30" wide rows

CROP HEIGHT 50-60cm (first year)
150cm (subsequent years)**Supplied in 3 kilo 0.5 hectare units****WHY SELECT THIS CROP?**

Wood or hedgeside perennial cover



Chicory

- Perennial chicory
- Spring sown
- Excellent driving cover in second year
- Deep rooted
- Drought tolerant
- Best mixed with other species in first year

CROP HEIGHT 30-40cm (first year)
150-200cm (second year)**Supplied in 3 kilo 0.5 hectare units****WHY SELECT THIS CROP?**

Tall, spectacular cover





Sandoval Quinoa

- Capable of shedding up to 2 tonnes per hectare
- Sheds high protein seed which will help reduce feed bills
- Seeds are highly sought by pheasants, partridges and farmland birds
- Ideal for use with companion crops such as Keeper kale or Interval rape/kale hybrid

CROP HEIGHT 80-150cm

Supplied in 5 kilo 0.5 hectare units



Canary Grass (*Phalaris Aquatica*)

- Perennial cover
- Will grow on poor soils and exposed areas
- Second year growth can reach 2 metres
- Takes two years to become fully established
- Driving or nesting cover

CROP HEIGHT 50-60cm (first year)
150cm (subsequent years)

Supplied in 3 kilo 0.5 hectare units



Buckwheat

- Thick, bushy seed producing plant
- Seed shed occurs in early autumn
- Very fast establishment with some weed smothering properties
- Can be used adjacent to flight ponds to attract ducks and geese
- Can be sown in woodland glades
- Sown at 50 kilos per hectare

CROP HEIGHT 70-120cm

Supplied in 10 kilo or 25 kilo units



Linseed

- Very fast establishment
- Tolerates a wide range of soil types
- Broken canopy is very attractive to partridges
- Autumn seed shed produces a palatable feed
- Sown at 60 kilos per hectare

CROP HEIGHT 60-70cm

Supplied in 25 kilo units



Sweet Clover

- A nectar producing biennial clover
- Thrives on neutral and calcareous soils
- Ability to fix "free nitrogen"
- Second year growth can reach 1-2 metres in height
- Best sown in conjunction with kale or canary grass

CROP HEIGHT 85-150cm

Supplied in 5 kilo 0.5 hectare units



Oilseed Radish

- Very fast growth
- Good weed suppressant
- Seeds are used by wild birds late into winter
- Can be used for biomass green manure
- Sown at 20 kilos per hectare

CROP HEIGHT 60-80cm

Supplied in 5 kilo or 20 kilo units



Phacelia

- Extremely fast growing catch crop
- Brilliant pretty blue flowers attract huge numbers of insects
- Pollen and nectar provider
- Competes well with weeds
- Care should be taken in following crops, as phacelia can reseed itself readily

CROP HEIGHT 30-60cm

Supplied in 5 kilo 0.5 hectare units



Texcel Greens

- Summer sown cover crop
- Better winter hardiness than white mustard
- Ideal for use on areas where spring sown cover has failed
- Sown at 5 kilos per hectare

CROP HEIGHT 40-70cm

Supplied in 1 kilo units



Mustard

- Fast establishment and drought tolerant cover
- Ideal summer sown catch crop
- Broadcast or drill into cereal stubble
- Resilient to rabbit damage because of its rapid establishment
- Drill at 15-20 kilos per hectare

CROP HEIGHT 30-100cm

Supplied in 10 kilo or 20 kilo units



Spring Triticale

- The best cereal crop for gamecover situations
- Spring sown
- Increased seed head emergence and feed value
- Will tolerate poorer soils with low pH levels
- Resilient to rabbit damage
- Seed heads should remain late into the winter months
- Sow at 125 kilos per hectare

CROP HEIGHT 90-100cm

Supplied in 25 kilo units



Stubble Turnip

- A very fast-growing cover provider
- Ready to utilise in 12 weeks from sowing
- Tankard shaped varieties like Samson grow out of the ground and therefore hold their leaves higher for improved canopy
- Ideal for sowing in the summer and autumn (less weed pressure)
- Can be grazed by sheep afterwards

CROP HEIGHT 80-100cm

Supplied in 5 kilos 1 hectare units

Estate Grass Mixture

- Ideal for producing release pen areas
- Amenity grasses produce a good dense floor
- Hardwearing
- Ideal for birds to dry off and feed
- Can be left uncut to produce taller cover
- Estate can grow in shaded areas

Mixture Formulation

- Amenity perennial ryegrass
- Creeping red fescue

Supplied in 20 kilo units

**WHY
SELECT
THIS
CROP?**

Great for professional
release pen areas



Beetle Bank

- Ideal for the creation of 2 metre tussocky grass ridges
- Beetle banks should run from one side of an arable field to the other for maximum benefits
- You may need to cut the grass several times during the first summer to aid establishment
- Good green corridor for animal movement

Mixture Formulation

- Chewings fescue
- Sheeps fescue
- Smooth stalked meadow grass
- Timothy
- Cocksfoot
- Meadow fescue

Supplied in 10 kilo 0.5 hectare units

**WHY
SELECT
THIS
CROP?**

Great habitat for insects
and small mammals



CS Option
AB3

These products are cultivated flowers and are not suitable for Countryside Stewardship. They will however brighten up all amenity areas.

Colour Splash

Festival

- Tall growing mixture, 1m - 1.5m, ideal for adding a splash of colour to any dull area
- Contains new varieties, such as Sunbow Zinnia, which provides several waves of flowers over a longer time period
- Good ground cover and a source of insects and wildlife
- Appropriate mixture for dry land

Floral Arrangement:

Annuals, 5 flowers

Sowing: April - May, 2g/m²

Germination: 8-10 days in the correct conditions

Flowering: Mid-June to mid-November



Aurora

- Medium height mixture, around half a metre tall
- New varieties; Sunbow Zinnia and Trianon Cosmos provide more effective and long-lasting flowering
- Ideal for soil with more organic material and nutritive mineral elements

Floral Arrangement:

Annuals, 5 flowers

Sowing: April - May, 2g/m²

Germination: 8-10 days in the correct conditions

Flowering: from mid-June to early November



**Colour Splash
PACKAGING
OPTIONS:**
4kg bag and /or
400g metal
can /bag



Honey Bee

- Tall growing mixture, around 1m to 1.5m
- Composed of flowering plants for landscaping which will attract insects
- Perfect mix for attracting pollinating insects, whilst beautifying the countryside
- Yellow Cosmos, Godetia and Black Eyed Susan are included in the mixture

Floral Arrangement:

Annuals, 11 flowers

Sowing: April - June 2g/m²

Germination: 8-10 days in the correct conditions

Flowering: Mid-June to mid-October



Please visit
www.lgseeds.co.uk/colour-splash
to see the full Colour Splash collection



32

A close-up photograph of a tall, green plant with large, heart-shaped leaves and several clusters of small, purple, spiky flowers. The plant appears to be growing in a field or garden setting.

Notes

TERMS & CONDITIONS OF SALE
All varieties and products listed in this catalogue are offered strictly subject to safe harvest, final certification and remaining unsold on receipt of orders. All other terms & conditions of sale will be advised by your individual HiBird distributor or stockist.

Version 2021

33

All varieties and products listed in this catalogue are offered strictly subject to safe harvest, final certification and remaining unsold on receipt of orders. All other terms & conditions of sale will be advised by your individual HiBird distributor or stockist.

33



Beckii Gibbs
Commercial Manager
T 01380 729200
M 07736 930191
E beckii@unitedoilseeds.co.uk



Jo Gunes
Business Manager
T 01380 732319
M 07502 315331
E jo@hubbardsseeds.co.uk



Local Support

Area Manager contact details



1 Beckii Gibbs
T 01380 729200
M 07736 930191
E beckii@unitedoilseeds.co.uk



5 Lucy Jackson
M 07500 017355
E lucy@unitedoilseeds.co.uk



9 Holly Gourley
T 01531 635567
M 07469 240034
E holly@unitedoilseeds.co.uk



2 David Whyte
T 01380 729200
M 07733 017072
E davidw@unitedoilseeds.co.uk



6 Nick Mecrow
T 01359 259764
M 07500 017304
E nickm@unitedoilseeds.co.uk



10 James Hood
T 01603 270511
M 07836 755454
E james@unitedoilseeds.co.uk



3 Andrew Milne
T 01573 223809
M 07917 224252
E andrewm@unitedoilseeds.co.uk



7 Ian Pugh
T 01903 884586
F 01903 883442
M 07836 755456
E ianp@unitedoilseeds.co.uk



11 Rebecca Beesley
M 07501 987360
E rebeccab@unitedoilseeds.co.uk



4 Ray Pennock
T 01642 762340
M 07710 647047
E ray@unitedoilseeds.co.uk



8 Ed Chudley
M 07785 717769
E edc@unitedoilseeds.co.uk

