

Hubbards
Seeds

GRASS SEED 2025



New grass mixtures from Hubbards Seeds featuring Barenbrug UK varieties



- ✓ Barenbrug UK breed agricultural grasses in Britain in partnership with AFBI
- ✓ Barenbrug UK grasses are tried, tested and proven with British farmers including at the Barenbrug UK Cropvale Research Site
- ✓ Barenbrug UK have over 3,500 hectares of British farmland producing their grass seed
- ✓ All Barenbrug UK mixtures are designed and formulated to ensure continuous improvement for British farming
- ✓ All grass varieties are recommended by NIAB

in partnership with the grass experts



All Hubbards Seeds mixtures are available to maximise production for Scottish farmers with varieties inline with the Scottish recommended list.



The Benefits of Grass

Having grass and forage crops in your rotation and a grassland management plan can bring about a huge number of benefits to your farm and farming businesses. The specific benefits will depend on what you sow but can include:

- ✓ Excellent return on investment, A new reseed more than pays for itself in the first year!
- ✓ Flexible options to fit your rotation length and feed requirements – grass can be simple!
- ✓ Increased Nitrogen efficiency by using species with better N utilisation, or by increasing the use of legumes (reduced artificial N use and bought in protein).
- ✓ Improved soil health and nutrient cycling.
- ✓ Prevention of nutrient leaching and soil erosion therefore protecting water quality
- ✓ Improved organic matter content, and soil structure, better nutrient retention, improved soil stability, water retention and/or filtration.
- ✓ Well managed, healthy soil promotes high populations of soil fungal, microbial and insect populations whilst sward diversity can significantly influence the whole farm ecosystem by encouraging insect, pollinator, mammal, and bird populations.
- ✓ Perennial grass swards will improve volumes of stored Carbon over short-term crops
- ✓ Healthier livestock and diverse nutrient rich, high-quality forage diet. Deep rooting grass species can access different trace elements from further down the soil profile and some species also have anthelmintic properties. A well-managed grazing platform can extend the grazing season, satisfying the 5 freedom welfare requirements.
- ✓ Increased yield of higher nutrient quality grass (sugar/ digestible fibre/protein/trace nutrient), increased grazing days, better meat and milk productivity, both in terms of yield and quality, can have a very positive impact on enterprise profitability
- ✓ Attention to detail in management terms can also reduce inputs such as anthelmintics, herbicides and fertiliser requirements which is both environmentally and financially beneficial.

STEWARDSHIP & ENVIRONMENTAL MIXTURES

A comprehensive range of mixtures are available which meet the needs of various Stewardship & Environmental schemes. The most popular of these mixtures are GS4, AB8, AB9 and AB15. Please ask your local representative for more details or check out www.barenbrug.co.uk/environmentalschemes
Rules of schemes in England and Wales may be different.

Short term



Top Cut

For high yields of quality silage

- 3-4 bulky cuts of silage a year for up to 3 years
- Suitable for multi-cut systems
- Potential for excellent autumn grazing
- Blend of diploids and tetraploids for yield and forage quality
- High tetraploid content to maximise sugars

			Heading date
4 kg	Abys	Italian RG Dip	23 May
3 kg	Barmultra II	Italian RG Tet	22 May
4 kg	Bannfoot	Hybrid RG Tet	22 May
3 kg	Kirial	Hybrid RG Tet	24 May
14kg			1,225 seeds/m ²

Short term



Top Cut Red Clover

A high protein ley which can be cut several times a season

- Produces high energy and high protein silage
- Red clover will fix valuable nitrogen
- Potential for aftermath grazing
- Red clover blend delivers consistently high yields for the duration of the ley

			Heading date
3 kg	Abys	Italian RG Dip	23 May
2 kg	Barmultra II	Italian RG Tet	22 May
3 kg	Bannfoot	Hybrid RG Tet	22 May
3 kg	Kirial	Hybrid RG Tet	24 May
3 kg	Prota Red Clover Mix		
14kg			1,225 seeds/m ²



Repairs (short term)



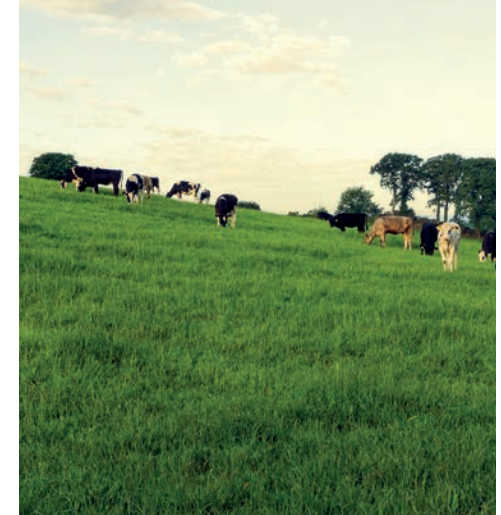
Rejuvenator

Ideal for poached or drought damaged swards

- An ideal 'grass boosting' solution
- Establishes very quickly
- Enhances palatability
- Can also be used for new ley establishment where cost is a key factor

7 kg	 Bannfoot	Hybrid RG Tet
7 kg	 Caledon	Inter PRG Tet
6 kg	Bijou	Late PRG Tet
20kg	800 seeds/m ²	

Medium term (3-5 years)



Flexisward

A flexible mixture that will work how you want it to

- 3-4 year mixture for silage and grazing
- The most productive and versatile ley on the farm
- Provides a choice of management systems

Available without clover

			Heading date
1.5 kg	Bannfoot	Hybrid RG Tet	22 May
1.5 kg	Kirial	Hybrid RG Tet	24 May
2 kg	Moir	Inter PRG Dip	23 May
2 kg	Galgorm	Inter PRG Dip	22 May
2 kg	Tollymore	Inter PRG Dip	23 May
2 kg	Seagoe	Inter PRG Tet	22 May
2 kg	Prota Red Clover Mix		
1 kg	Prota White Clover Mix		
14kg			2,150 seeds/m ²

Long term (5 years and over)



Smithfield

A medium term cut and graze mixture

- 4-5 year, all ryegrass ley, with white clover
- Designed for high performance grazing
- Will provide one big silage cut



Greensward

Long term grazing mixture with an early bite

- Continuity of production from early spring to late autumn
- High sugar tetraploids encourage stock to eat more – leading to higher liveweight gain or more milk
- High quality white clover blend provides minerals and trace elements vital to your livestock's diet
- Wide range of heading dates to ensure season long grazing is available

			Heading date
4 kg	Callan	Late PRG Dip	31 May
4 kg	Drundrod	Late PRG Dip	1 June
2 kg	Ballintoy	Late PRG Tet	30 May
3 kg	Bijou	Late PRG Tet	1 June
1 kg	Prota White Clover Mix		
14kg			
			2,000 seeds/m ²

			Heading date
2 kg	Glasker	Early PRG Dip	17 May
3 kg	Galgorm	Inter PRG Dip	22 May
2 kg	Seagoe	Inter PRG Tet	22 May
3 kg	Ballyvoy	Inter PRG Dip	1 June
2 kg	Bijou	Timothy	1 June
1 kg	Comer	Timothy	8 June
1 kg	Prota White Clover Mix		
14kg			
			2,830 seeds/m ²

Long term (5 years and over)



Drought Mixture

For dry and drought prone areas

- Designed to withstand drought and maintain production
- Tall fescue is tolerant of both heat and drought
- Tetraploid grasses have deep root systems, ideal in dry conditions

*Also available with herbs and native legumes

4kg	Moira	Inter PRG Dip
3kg	Seagoe	Inter PRG Tet
3kg	Bardoux	Inter PRG Tet
1kg	Comer	Timothy
1kg	Cosmonaut	Meadow Fescue
1kg	Archibaldi	Cocksfoot
1kg	Prota White Clover Mix	
14kg		
		2,750 seeds/m ²



Equipaddock

Horse and pony paddock mixture

- The inclusion of creeping red fescue aids the rapid repair of damaged swards
- The dense mat produced reduces poaching and aids hoof protection from stones
- Equipaddock will tolerate several years of wear and tear

3 kg	Glasker	Early PRG Dip
3 kg	Glenariff	Inter PRG Dip
3 kg	Glenarm	Late PRG Dip
1 kg	Comer	Timothy
2 kg	Sergei	Strong Creeping Red Fescue
1 kg	Cosmonaut	Meadow Fescue
1 kg	Bariris	Smooth-stalked Meadow Grass
13kg		
		2,800 seeds/m ²

Long term



Herbal Leys



Grass & Herb Blends



Barmix

For beef and sheep grazing

- An innovative mixture developed to offer an alternative option for beef and sheep enterprises looking for low input, high output.
- ARCHIBALDI, BARDOUX and BARCUBY are proven in on-farm grazing trials to be highly palatable due to their soft leaves.
- Cocksfoot grows earlier in the spring than other species, delivering that vital early bite for lambing.

Heading date			
2 kg	Ballyvoy	Late PRG Dip	1 June
3 kg	Gracehill	Late PRG Tet	1 June
4 kg	Bardoux	Tall Fescue	13 May
2 kg	Barcuby	Tall Fescue	17 May
1 kg	Archibaldi	Cocksfoot	20 May
1 kg	Baronaise	Timothy	13 June
1 kg	Prota White Clover Blend		
14kg			

Bar GS4

Designed to bring a range of benefits to livestock health, soil health and soil fertility

Heading date			
3 kg	Bannfoot	Hybrid RG Tet	22 May
3 kg	Glenarm	Late PRG Dip	2 June
1 kg	Comer	Timothy	8 June
2 kg	Bardoux	Tall Fescue	13 May
0.9 kg	Cosmonaut	Meadow Fescue	
1 kg	Archibaldi	Cocksfoot	20 May
2 kg	Prota Red	Red Clover Mix	
0.5 kg	Sanfoin	Legume	
0.1 kg	Birdsfoot Trefoil	Legume	
0.1 kg	Alsike Clover	Legume	
0.15 kg	Commander	Chicory	
0.15 kg	Captain	Plantain	
0.05 kg	Yarrow	Herb	
0.05 kg	Sheeps Parsley	Herb	
14kg			

SFI CSAM3 Oversow Formerly Bar Finisher

A blend of chicory, plantain and clovers

- All the same benefits as Bar Finisher, but can also be used to oversow legumes and herbs into existing leys for use in the England and Wales SFI CSAM3 scheme
- Designed for grazing livestock, particularly finishing youngstock
- Will grow in dry conditions
- Highly digestible and palatable for live weight gains

*Also available with a no chicory option

0.75 kg	Commander	Chicory
0.75 kg	Captain	Plantain
2.1 kg	Prota Red Clover Mix	
1.4 kg	Prota White Clover Mix	
10kg	5kg/acre	

BarHerbal SFI CSAM3

A biodiverse mixture for animal performance

- All the same benefits as Barherbal, updated to comply with the England and Wales SFI CSAM3 scheme
- Long growing season, rich in minerals and trace elements
- Palatable and great for animal intakes and performance

*Also available with a no chicory option

Heading date			
2 kg	Galgorm	Inter PRG Dip	22 May
1.5 kg	Moira	Inter PRG Dip	23 May
2 kg	Seagoe	Inter PRG Tet	22 May
2 kg	Callan	Late PRG Dip	31 May
3 kg	Ballintoy	Late PRG Tet	30 May
0.5 kg	Baronaise	Timothy	13 Jun
0.45 kg	Commander	Chicory	
0.45 kg	Captain	Plantain	
1.3 kg	Prota Red Clover Mix		
0.8 kg	Prota White Clover Mix		
14kg			

Discover our range of landscaping and amenity products.



THE ALL ROUNDER

A multipurpose, hard-wearing grass seed that's ideal for creating new lawns, overseeding or repairing worn patches.

- A great everyday lawn for the rough and tumble of family use
- Rapid germination and establishment
- Withstands heavy foot traffic
- Ideal for the whole family to play on and enjoy

60% Perennial Ryegrass

40% Strong Creeping Red Fescue

Sowing - 25-35g per m²
Oversowing - 25-30g per m²

THE PERFECTIONIST

A fine and luxury traditional lawn seed mixture.

- A very fine leaved and dense lawn
- High quality and beautiful looking lawn
- Improved tolerance to common lawn diseases
- Ideal for the traditional ornamental lawn

40% Strong Creeping Red Fescue

30% Slender Creeping Red Fescue

30% Chewings Fescue

Sowing - 25-35g per m²
Oversowing - 25-30g per m²

THE ACTION HERO

A very hard wearing mixture that contains tough wearing grasses which is ideal for playing areas with high traffic.

- High levels of perennial ryegrass in this mixture give it substantial ability to withstand wear and tear
- This tough mixture is ideal for areas of the garden that are used frequently
- Gives an attractive lawn that's extremely tough

80% Perennial Ryegrass

20% Strong Creeping Red Fescue

Sowing - 25-35g per m²
Oversowing - 25-30g per m²

All available in 10 & 20kg pack sizes



Brassica & Forage Crops

Grass has to be the first priority for feeding livestock efficiently, however forage crops are a valuable tool for meeting the changing feed and energy requirements throughout the year.

Feed supply and stock performance can be manipulated through the use of different forage species. We recognise the integral role of brassicas, forage herbs and lucerne in breeding and research and we are proud to supply products specifically bred for UK systems.

Benefits of Brassica and Forage Crops

- Strategic crop in pasture renovation – makes regressing easier i.e. less weed pressures
- Means of controlling spring surplus and shifting feed from spring into summer or autumn to winter
- Breaking up insect pest cycles to help renovate pasture
- High animal performance potential
- A number of options with a lot of flexibility
- Consistently high quality ME 10.5-13, proteins 16-24%

Sowing & Utilisation Guide

	January	February	March	April	May	June	July	August	September	October	November	December
STUBBLE TURNIP	USE	USE		SOW	SOW		SOW	SOW	USE	USE	USE	USE
FORAGE RAPE						SOW	SOW	SOW		USE	USE	USE
KALE	USE	USE	USE	SOW	SOW	SOW				USE	USE	USE
LUCERNE			SOW	SOW	SOW	USE	USE	USE	USE			
VETCH	USE	USE	SOW	SOW	SOW	USE	USE	USE	SOW	SOW	USE	USE
PLANTAIN			SOW	SOW	USE	USE	USE	SOW	SOW	USE		
CHICORY			SOW	SOW	USE	USE	USE	SOW	SOW	USE		

Brassicas



Stubble Turnips

Barkant - The very vigorous Barenbrug-bred diploid turnip, combines higher leaf production with high sugar and dry-matter content.

- High leaf to bulb ratio resulting in high levels of protein
- Proven very palatable to grazing animals with good disease resistance
- Early maturing (60-90 days) for excellent autumn/winter feed
- Deep root system to rich essential nutrients deep in the soil



Kale

Caledonian - A high yielding kale with clubroot tolerance. Its huge yield makes it ideal for utilisation by dairy and beef cattle.

Keeper is a medium height kale with excellent leaf to stem ratio (greater than 50% leaf).

- A well-proven, highly adaptable fodder crop which consistently provides very high yields of succulent green fodder

Forage Rape

BARCOLI - A multi-purpose forage rape with excellent autumn / early winter feed potential.

- Good regrowth potential with excellent winter keeping properties
- Good aphid tolerance
- Fast growing leafy catch crop
- High protein content
- Flexible sowing period
- Sheep, dairy or beef production



Legumes



Vetch

Barvicos - a common vetch that delivers a quick coverage of soil and is highly productive and rich in proteins.

- A common vetch that fixes large amounts of nitrogen and is high in protein. Barvicos can be used for annual forage production either alone or in a mixture with grasses. It is also ideal for green manuring
- Barvicos has vigorous growth and is winter hardy. It will establish and grow well on most soil types, helping to soak up nutrients and hold in the soil for use by spring cropping or reseeding
- Vetch can be used typically 70-100 days after sowing, when 30-50% of the plants have flowered
- Deep rooting and improves soil structure
- This vetch can be sown either as monoculture or as part of mixtures with other species, such as clovers and/or annual grasses
- Highly productive and protein rich forage variety
- Can be sown both in spring and autumn



Lucerne

ARTÉMIS – One of the most underrated and under-utilised forage crops available to livestock farmers in the UK.

- Lucerne is a highly nutritious forage for livestock. It combines good digestibility with high proteins providing excellent milk yields or daily live weight gains
- A more mature hay crop would be more suitable for feeding young stock
- Perennial – Well managed crops can persist for up to 5 years
- Performs well in free draining, drier environments due to tap roots
- Dual purpose

Clovers



Prota White Clover

A blend of white clovers.

- Gives better animal performance, higher milk yields and better live weight gains. It also produces a better quality sward, with fewer weeds and less disease
- It has an exceptionally long growing season and 'fixes' free nitrogen from the atmosphere for maximum production
- By using a blend of different varieties there are always at least two that are best suited to whatever the management being applied to the sward
- Animals prefer to graze a clover/grass sward – this results in higher voluntary intakes and better animal performance

Prota Duet

Red and white clover blend.

- Developed to meet the need for rapid nitrogen fixation to feed new leys
- Increased yield. Our mixture trials showed a yield increase of 5% in the first year after sowing, worth around £100.00 per hectare (£40.00/acre)
- The increase continued into the second harvest year, producing additional yields worth £75.00 per hectare (£30.00/acre)
- Increases the overall protein content of the sward, red clover's protein content is around 17% compared to grasses of around 12%



Prota Red Clover

A blend of red clovers.

- Balances production through the growing season, while maintaining excellent persistency and disease resistance. Red clover swards managed correctly can meet the forage requirements of many farms and significantly improve protein contents and overall feed value of winter forage
- It's better suited to silage production than white clover because of a more erect growth habit and its significantly higher forage yields
- Red clover silage has a high crude protein content of 16% to 20% and a ME content of 10 to 12MJ/kg DM



Beckii Gibbs
Commercial Manager
T 01380 729200
M 07736 930191
E beckii@unitedoilseeds.co.uk



Jo Gunes
Business Manager
T 01380 732319
M 07502 315331
E jo@hubbardsseeds.co.uk



Local Support

Area Manager contact details



1 Beckii Gibbs
T 01380 729200
M 07736 930191
E beckii@unitedoilseeds.co.uk



2 Andrew Milne
T 01573 223809
M 07917 224252
E andrewm@unitedoilseeds.co.uk



3 Ray Pennock
T 01642 762340
M 07710 647047
E ray@unitedoilseeds.co.uk



4 Lucy Jackson
M 07500 017355
E lucy@unitedoilseeds.co.uk



5 Peter Collier
M 07389 836880
E peter@unitedoilseeds.co.uk



6 Rebecca Beesley
T 01747 870680
M 07501 987360
E rebeccab@unitedoilseeds.co.uk



7 Ed Chudley
M 07785 717769
E edc@unitedoilseeds.co.uk



8 Holly Gourley
M 07469 240034
E holly@unitedoilseeds.co.uk



9 James Hood
T 01603 270511
M 07836 755454
E james@unitedoilseeds.co.uk

www.hubbardsseeds.co.uk



Part of the United Oilseeds Group

United Oilseeds
THE LEADING BREAK CROP SPECIALIST



Hubbards Seeds
St James House, Gains Lane,
Devizes, Wiltshire SN10 1FB

www.hubbardsseeds.co.uk



@hubbardsSeeds



Part of the United Oilseeds Group

United Oilseeds

THE LEADING BREAK CROP SPECIALIST